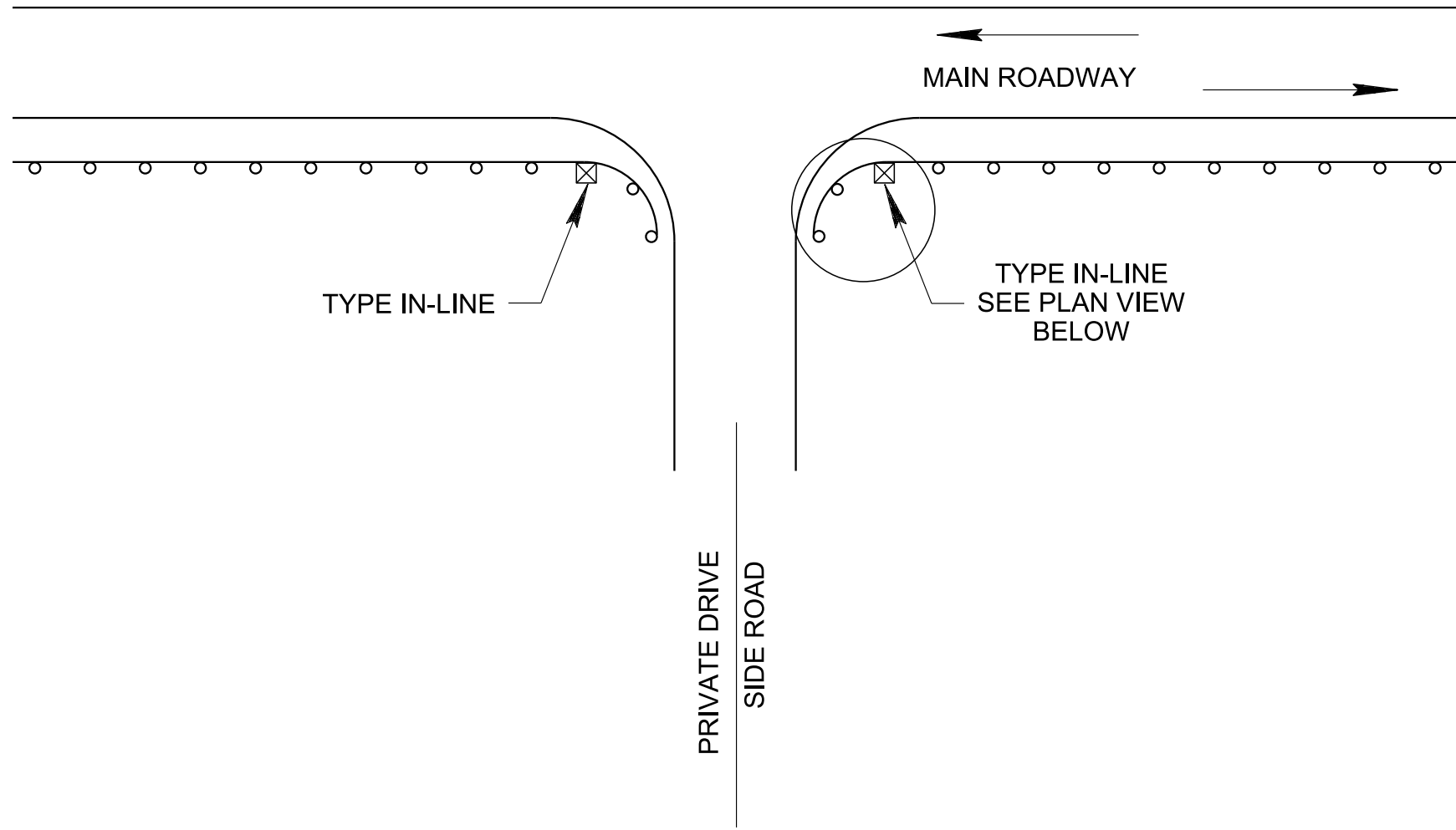
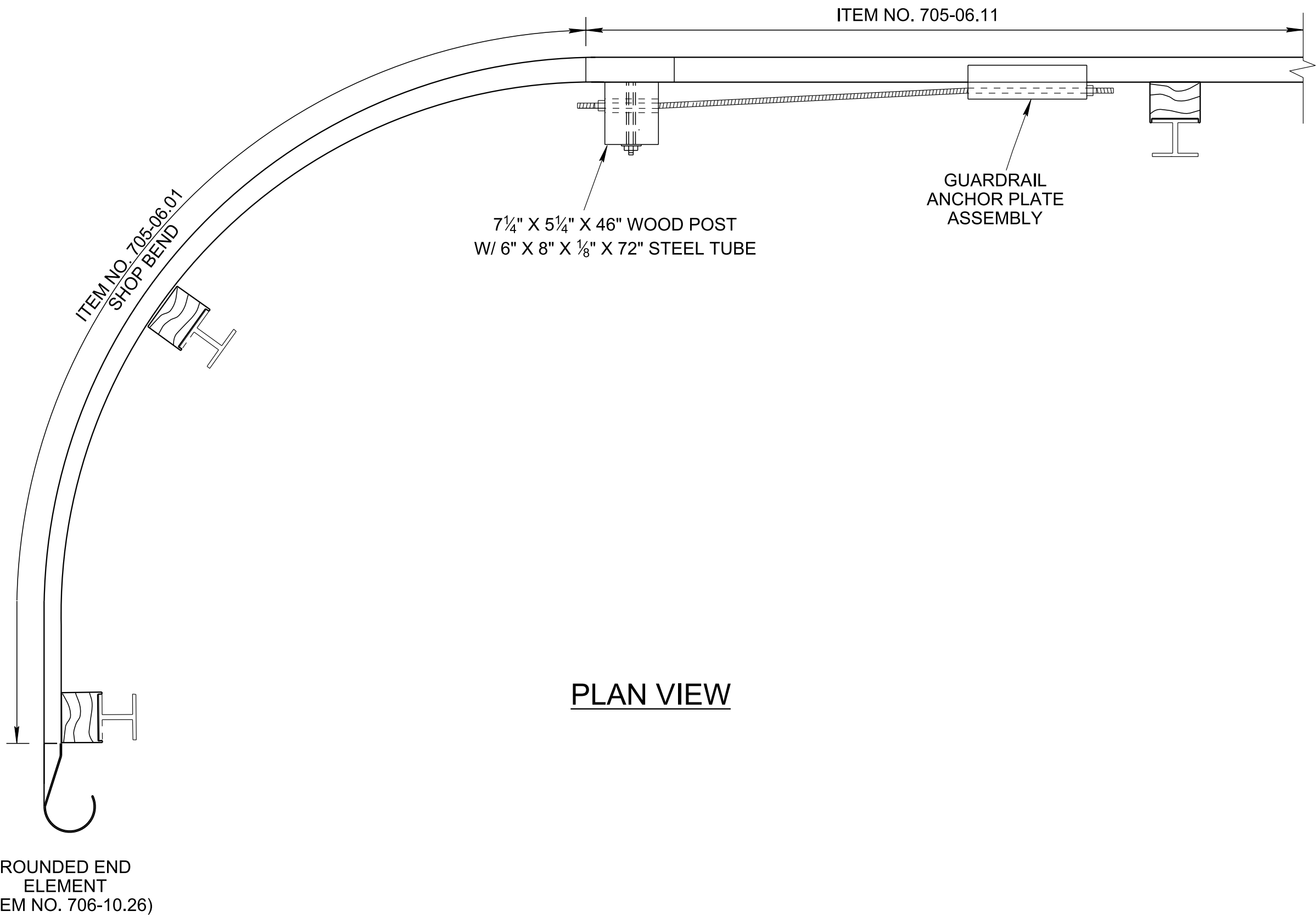


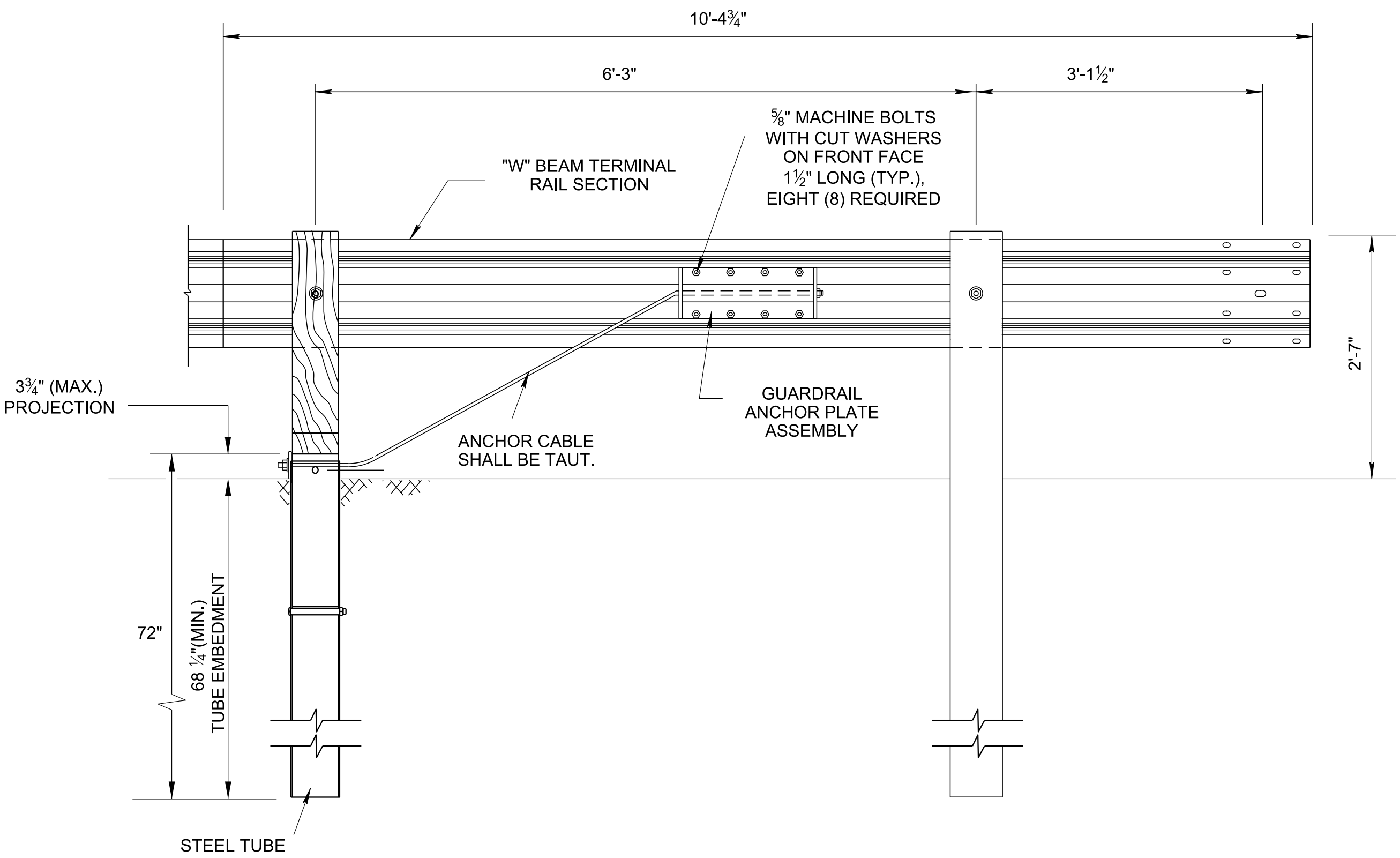
- REV. 5-27-16: REVISED POST SIZE IN PLAN VIEW. ADDED DIMENSIONS, REVISED DETAIL, REVISED NOTES.
- REV. 3-28-17: CHANGED PAY ITEM NUMBER.
- REV. 7-5-17: COMBINED THE TWO PLAN VIEWS. ADDED A DIMENSION TO THE ELEVATION VIEW.



GUARDRAIL TERMINAL ANCHOR (TYPE IN-LINE) APPLICATION



PLAN VIEW



ELEVATION VIEW FROM BEHIND GUARDRAIL
(SEE S-GRA-3 FOR HARDWARE DETAILS)

NOTE TO DESIGNER

DO NOT USE ON NATIONAL HIGHWAY SYSTEM (NHS), USE S-PL-2 ON NHS
DO NOT USE WITHOUT ALSO REFERENCING S-GRA-3 .

GENERAL NOTES

- A

THIS ANCHORAGE MAY ONLY BE USED ON THE TRAILING END OF A BARRIER WHICH IS NOT EXPOSED TO DIRECT VEHICULAR IMPACT OR IS OUTSIDE THE CLEAR ZONE (ONLY DIVIDED HIGHWAYS OR ROADS WITH ONE WAY TRAFFIC) USE S-PL-1 TO DETERMINE LENGTH OF NEED.
- B

IN-LINE GUARDRAIL TERMINAL TO BE PAID FOR UNDER ITEM NUMBER: PAY ITEM NO. 705-06.11 GR TERMINAL (IN-INLINE) MASH TL3 PER EACH COST TO INCLUDE WOOD POST, STEEL TUBE, ANCHOR CABLE, AND GUARDRAIL ANCHOR PLATE ASSEMBLY.

MINOR REVISION -- FHWA
APPROVAL NOT REQUIRED.

STATE OF TENNESSEE
DEPARTMENT OF
TRANSPORTATION

IN-LINE
GUARDRAIL
ANCHOR

7-11-13

S-GRA-4